



Product List Ferrari F348

TB / TS / GTB / GTS / Spider

Content

Aerodynamic & Design

Aluminum Wheels & Sets

Spacers

Sport Springs

Sport Brake System

Brake Performance Components

Sports Exhaust

Tail Pipes

Sports Catalysts

Engine Tuning Complete Kits

Engine Tuning Single Components

Sports Steering Wheels

Sports Seats

Interior

Velour Carpets



Aerodynamik

Carbon Super Light Weight

- ✧ All parts hand made from carbon fibre
- ✧ Finished in transparent high gloss polished or matt
- ✧ Sportive, individual and fine looks
- ✧ Improved aerodynamics, specially increased down force
- ✧ Manufactured after highest quality standards and characterized through exact fitting

Linea Sprint

Order-No.

Spoiler Lip
Assembly

F.70.348.C51S
F.70.348.C51M

Roof Spoiler
Assembly

F.70.348/55.C52S
F.70.348/55.C52M

Roof Spoiler with 3 Brake Lights
Assembly

F.70.348/55.CB53S
F.70.348/55.CB53M

Aerodynamik

Epoxyd Carbon Composite

- ✧ Made from Carbon reinforced Epoxyd Composite
- ✧ To be painted colour matching
- ✧ Manufactured after highest quality standards
- ✧ Characterized through exact fitting
- ✧ Only 15 % more weight than carbon fibre

Linea Sprint

Order-No.

Roof Spoiler
Assembly & Paintwork

F.70.348/55.G52S
F.70.348/55.G52M

Roof Spoiler with 3 Brake Lights
Assembly & Paintwork

F.70.348/55.GB53S
F.70.348/55.GB53M

Design Lamps

Lamp Set

- ✧ Modern looks



Specification

Colour

Order-No.

2 Turn Signals R+L

Black
White

F.65.S01T
F.65.W01T

Assembly

F.65.00M

Aluminum Wheels

Imola Racing Exclusive Wheel "Fiorano III"



- * Very light three piece 19" aluminum rim finished in sterling silver
- * Titanium screws and outer lips in high gloss polished
- * Effectively fill out the wheel arches giving a fuller and wider appearance
- * For use with OEM center cap or Imola Racing center cap
- * Quality made in Germany
- * Centres paintable

Front Axle	Rear Axle	Order-No.
8,0 x 19*		F.80.F.8019S
8,5 x 19		F.80.F.8519S
	10,5 x 19	F.80.F.10519S
	11,0 x 19*	F.80.F.11019S

* only Export

Upon request centres painted in colour of choice. Surcharge of 200,00 Euro Net per wheel applies.

Wheel Sets

Ready to mount set of 4 wheels

- * In combination with Pirelli high performance tyres
- * Completely assembled and balanced

Front Axle	Rear Axle	Order-No.
8,0 x 19 225/35 R 19	10,5 x 19 295/30 R 19	F.85.F.80105R10R
8,5 x 19 235/35 R 19	11,0 x 19 295/30 R 19	F.85.F.85110R11R

Assembly per vehicle 85.00M

Upon request centres painted in colour of choice. Surcharge of 800,00 Euro Net per set applies

Aluminum Wheels

Imola Racing Exclusive Wheel "Challenge III"

- ✧ Very light three piece 18", 19" & 20" aluminum rim in sterling silver
- ✧ Titanium screws and outer lips in high gloss polished
- ✧ Effectively fill out the wheel arches giving a fuller and wider appearance
- ✧ For use with OEM center cap or Imola Racing center cap
- ✧ Quality made in Germany



Front Axle	Rear Axle	Order-No.
8,0 x 18		F.80.CH.8018S
8,5 x 18		F.80.CH.8518S
	10,0 x 18	F.80.CH.10018S
	10,5 x 18	F.80.CH.10518S
8,0 x 19		F.80.CH.8019S
8,5 x 19		F.80.CH.8519S
	10,0 x 19	F.80.CH.10019S
	10,5 x 19	F.80.CH.10519S
8,0 x 20		F.80.CH.8020S
9,0 x 20		F.80.CH.9020S
	10,0 x 20	F.80.CH.10020S

Upon request centres painted in colour of choice. Surcharge of 200,00 Euro Net per wheel applies.

Wheel Sets

Ready to mount set of 4 wheels

- ✧ In combination with Michelin or Pirelli high performance tyres
- ✧ Completely assembled and balanced

Front Axle	Rear Axle	Order-No.
8,0 x 18 225/40 R 18	10,0 x 18 265/40 R 18	F.85.CH.80100R02R
8,5 x 18 225/40 R 18	10,5 x 18 295/35 R 18	F.85.CH.85105R03R
8,0 x 19 225/35 R 19	10,0 x 19 295/30 R 19	F.85.CH.80100R10R
8,5 x 19 235/35 R 19	10,5 x 19 295/30 R 19	F.85.CH.85105R11R
8,0 x 20 235/30 R 20	10,0 x 20 285/25 R 20	F.85.CH.80100R20R
9,0 x 20 245/30 R 20	10,0 x 20 285/25 R 20	F.85.CH.90100R20R

Assembly per vehicle 85.00M

Upon request centres painted in colour of choice. Surcharge of 800,00 Euro Net per set applies

Aluminum Wheels

Imola Racing Exclusive Wheel "Monza I"



- ✧ 1 pc. Aluminum rim in 18"
- ✧ Finished in sterling silver, black or chrome
- ✧ Effectively fill out the wheel arches
- ✧ For use with OEM center cap or Imola Racing center cap
- ✧ Quality made in Germany

Silber	Front Axle	Rear Axle	Order-No.
	8,0 x 18	10,0 x 18	F.80.M.8018S F.80.M.10018S
Schwarz	Front Axle	Rear Axle	Order-No.
	8,0 x 18	10,0 x 18	F.80.MS.8018S F.80.MS.10018S
Chrom	Front Axle	Rear Axle	Order-No.
	8,0 x 18	10,0 x 18	F.80.MC.8018S F.80.MC.10018S

Wheel Sets

Ready to mount set of 4 wheels

- ✧ In combination with Michelin or Pirelli high performance tyres
- ✧ Completely assembled and balanced

Silber	Front Axle	Rear Axle	Order-No.
	8,0 x 18 225/40 R 18	10,0 x 18 265/40 R 18	F.85.M.80100R02R
Schwarz	Front Axle	Rear Axle	Order-No.
	8,0 x 18 225/40 R 18	10,0 x 18 265/40 R 18	F.85.MS.80100R02R
Chrom	Front Axle	Rear Axle	Order-No.
	8,0 x 18 225/40 R 18	10,0 x 18 265/40 R 18	F.85.MC.80100R02R

Assembly per vehicle 85.00M



Spacers

Imola Racing Exclusive



- ❖ Improves general performance and handling
- ❖ Fill out wheel arch, fuller and wider appearance
- ❖ Type-approved by German TÜV
- ❖ Quality made in Germany

mm/Wheel Front Axle	mm/Wheel Rear Axle	mm/Axle	System	Order-No.
15		30	1	F.40.0261T
	15	30	1	F.40.0261T
	20	40	2	F.40.1760T
	25	50	2	F.40.1770T
	30	60	2	F.40.1780T
	35	70	2	F.40.1790T
Assembly / Axle System 1				F.40.01M
Assembly / Axle System 2				F.40.02M

System 1

The standard size (15 mm per wheel) is made of highly-strength alloy and is predicted with a special high quality anti-corrosion coating. This wheel spacer type is always delivered with a longer wheel bolt of 10.9 steel quality and OEM optic.

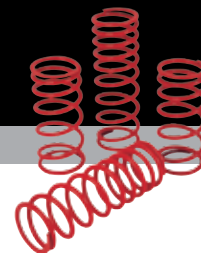
System 2

Special sizes (from 20 mm upwards per wheel) are made of highly-strength alloy and are protected with a special high-quality anti-corrosion coating. These spacers are to be fixed onto the hub with the added screws.

Sports Springs

Effective Chassis Lowering

- ❖ Sports Springs System for Front and Rear Axle
- ❖ Distinctive increment of driving stability
- ❖ Improved handling with higher traction limits



Specification	Order-No.
Set of 4 Sports Springs Drop of 35-40mm	F.10.348.01S
Assembly incl. electronic suspension alignment	F.10.348.01M

Sports Brake System

Superior Stopping Power

- ✦ High performance brake systems
- ✦ Race tested
- ✦ Substantially increased stability and pressure sensitivity



Specification

Order-No.

4 Brake Discs

Ø 355 mm, ventilated, cross grooved

4 Race Callipers

Sports Braking Pads

4 Steel Flex Hoses

Front / Rear

F.30.348/55.01R

Assembly incl. High Performance Brake Fluid

F.30.348/55.01M

Attention: Application only with 18" Wheels

1 Set Sports Brake Pads

As replacement per axle for FA

F.30.348/55.02S

As replacement per axle for RA

F.30.348/55.03S

Assembly / Axle

F.30.348/55.02/03M

Brake Kit Carozzeria Scagletti Sports

Original Scagletti

- ✦ For upgrade of standard brake
- ✦ Higher brake performance
- ✦ Exacte pressure sensitivity



Specification

Order-No.

4 Original Ferrari Brake Callipers wit Logo red/yellow/silver/titan (only in exchange)

F.30.348/55.10R

Assembly / Axle

F.30.348/55.10M

2 Drilled Brake Discs

for original brake callipers in front

F.30.348/55.11Q

Assembly

F.30.348/55.11M

2 Drilled Brake Discs

for original brake callipers in rear

F.30.348/55.12Q

Assembly

F.30.348/55.12M

1 Set Sports Braking Pads* FA

F.30.348/55.13S

1 Set Sports Braking Pads* RA

F.30.348/55.14S

Assembly

F.30.348/55.13/14M

4 Steel Flex Brake Hoses*

F.30.348/55.15S

Assembly incl. High Performance Brake Fluid

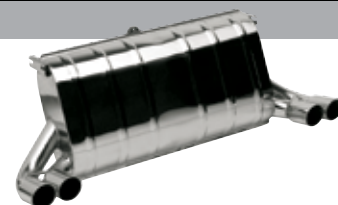
F.30.348/55.15M

* also to upgrade for original Brake System

Sports Exhaust

Pure Ferrari Sound

- ✧ Handmade from stainless steel, irresistible sound
- ✧ Power increment through substantial dynamic pressure reduction
- ✧ Optimized heat diversion providing improved thermal engine conditions



Model	Specification	Order-No.
GTB/ GTS 300 HP	Stainless Steel Exhaust Tail Pipes 4 x 72 mm	F.20.348.01S
GTB/ GTS 320 HP	Stainless Steel Exhaust Tail Pipes 4 x 72 mm	F.20.348.02S
only 300 HP version	Endrohre als Topfersatz Endrohre 4 x 72 mm	F.20.348.03R
Assembly		F.20.348.00M

Sports Exhaust Tail Pipes

Sportive Looks, Standard Sound

- ✧ To be welded to original exhaust
- ✧ Polished, double layer stainless steel

Model	Specification	Order-No.
4 x 72 mm	Set for R & L	F.22.348/55.01S
Assembly		F.22.348/55.01M

Sports Catalysts

Sound & Performance

- ✧ Increment of performance, full sound
- ✧ Extremely heat resistant



Specification	Order-No.
Sports Metal Catalysts 2 pcs. 200 Cell (parts in exchange)	F.25.348.01R
Sports Metal Catalysts 2 pcs. 400 Cell (parts in exchange)	F.25.348.02R
Assembly	F.25.348.00M
Catalyst Replacement Pipes	F.25.348.10S
Assembly	F.25.348.00M

Engine Tuning Complete Kits

Superior Power

- ✘ Over 10 years experience with Ferrari engines
- ✘ Durability tested on race track
- ✘ Highest quality standards
- ✘ increased rev.-limiter --> higher top speed possible

Prerequisite for output quotation is always the full availability of nominal stock power of

1. TB / TS - 220 KW / 300 HP
2. GTB / GTS / Spider - 235 KW / 320 HP

Step 1

- 1. 243 kW / 330 HP**
- 2. 257 kW / 350 HP**

Order-No.

Modifikation of motronic (ECU), sports exhaust system,
sports air filter, modified intake air flow

Power Increment:	22 kW/30 HP	
max. Torque:	1. 344 Nm	
	2. 348 Nm	
max. RPM:	1. 8.500 U/min	
	2. 8.750 U/min	F.50.348.01S

Assembly F.50.348.01M

Step 2

- 1. 248,50 kW / 338 HP**
- 2. 263,50 kW / 358 HP**

Order-No.

Modifikation of motronic (ECU), sports exhaust system,
sports air filter, modified intake air flow
2x200 cell metal sports catalyts (in exchange)

Power Increment:	28 kW / 38 HP	
max. Torque:	1. 344 Nm	
	2. 348 Nm	
max. RPM:	1. 8.500 U/min	
	2. 8.750 U/min	F.50.348.K02S

With Catalyst Replacement Pipes F.50.348.E02S

Assembly F.50.348.02M

Step 3

- 1. 259,00 kW / 352 HP**
- 2. 273,50 kW / 372 HP**

Order-No.

Modifikation of motronic (ECU), sports exhaust system,
sports air filter, modified intake air flow
2x200 cell metal sports catalyts (in exchange)
patented Fuel Cooling System

Power Increment:	38 kW / 52 HP	
max. Torque:	1. 348 Nm	
	2. 352 Nm	
max. RPM:	1. 8.500 U/min	
	2. 8.750 U/min	F.50.348.K03S

With Catalyst Replacement Pipes F.50.348.E03S

Assembly incl. air condition refill F.50.348.03M

Engine Tuning Single Components

Superior Power

- ✧ Substantial Output increment
- ✧ Race track approved Imola Racing exclusive developments

Prerequisite for output quotation is always the full availability of nominal stock power of

1. TB / TS - 220 KW / 300 HP
2. GTB / GTS / Spider - 235 KW / 320 HP

Specification

Order-No.

Modifikation of Motronic

increased rev.-limiter → higher top speed possible

Power Increment: ca. 11 kW / 15 HP

max. RPM:
1. 8500 U/min
2. 8750 U/min

V-max.:
1. über 280 km/h
2. 285km/h

F.50.348.10R

Assembly

F.50.348.10M

Patented Fuel Cooling System

Only in combination with ECU modification

Power Increment: 10,5 kW / 14 HP* F.50.348.11S

Assembly incl. air condition refill

F.50.348.11M

Sports Air Filter for 300 HP or 320 HP Version

F.50.348.12R

Assembly

F.50.348.12M

* at hot engine only

Engine Bay

Carbon Upgrade Kit

- ✧ Visual and technical upgrade of engine bay
- ✧ extrem high stability

Specification

Order-No.

Exhaust Cover Stainless Steel (set of 2 pcs.)

F.24.348.01T

Assembly

F.24.348.01M

Exhaust Cover Carbon (set of 2 pcs.)

F.24.348.02S

Assembly

F.24.348.02M



Sports Seats

Imola Racing Corse

- ❖ Comfortable Seat with hull in compound fibre
- ❖ Leather seating and sides, backside visible fibre
- ❖ With integrated headrest and seatbelt guidance
- ❖ Consoles for original mounting



Specification

Order-No.

Seat in leather

with console
Assembly

F.90.CORS.01R
F.90.CORS.01M

Surcharge for coloured hull

F.90.LACK.01P

Surcharge for material mix

leather/alcantara
uni or two tone

F.90.MIX.01P

Surcharge for sewing of middle part in Daytona-Design

F.90.MARA.01P

Sports Seats

Imola Racing Sportivo

- ❖ Ergonomic sport seat with various adjustment functions
- ❖ With integrated headrest and seatbelt guidance (optional)
- ❖ For original seat consoles



Specification

Order-No.

Sport

Leather uni, black or creme
Assembly

F.90.SPOR.01R
F.90.SPOR.01M

Comfort packet

Leather uni, black or creme
Surcharge for elec. high / oitch adjustment
and Airmatik
Assembly

F.90.SPOR.02P
F.90.SPOR.02M

Luxus packet

Leather uni, black or creme
Surcharge for elec. seat back rest,
seat heating / ventilation and perforated
seat and back rest centres
Assembly

F.90.SPOR.03P
F.90.SPOR.03M

Surcharge for seatbelt guidance through Headrest

F.90.SPOR.04P

Surcharge for material mix Leather/Alcantara F.90.MIX.01P

Surcharge for special Stitching of Seat Centers

F.90.DESIGN.01P

Sports Steering Wheels

Direct Car Control

- ❖ Improved car control through more precise feedback
- ❖ System with adapter
- ❖ Sportive looks
- ❖ fits for Imola Racing or original Ferrari horn button



Ausführung	Size	Order-No.
Competition Leder	ø 350	F.94.COLE.35R
Champion Material Mix	ø 350	F.94.CHMM.35R
Race Material Mix	ø 320	F.94.RAMM.32R
Race Material Mix	ø 350	F.94.RAMM.35R
Corse Leder	ø 320	F.94.CRLE.32R
Corse Leder	ø 350	F.94.CRLE.35R
Corse Wildleder	ø 330	F.94.CRWL.33R
Corse Wildleder	ø 350	F.94.CRWL.35R
Adapter 40 mm		F.94.NVOA.40R
Adapter 60 mm		F.94.NVOA.60R
Assembly		F.94.00.01M

Leather Interior

Additional Leather Sets

- ❖ Colour matching original colour or in colour of choice
- ❖ OEM leather quality
- ❖ Choice of leather, alcantara or leather/alcantara material mix
- ❖ Uni coloured or colour combinations

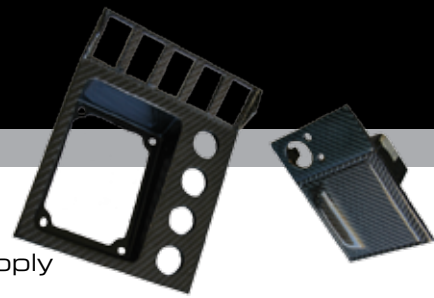
Specification	Order-No.
Door Panel (per Door)	F.93.348.01P
Assembly	F.93.348.01M
Seat Centre Lane (per Seat)	F.93.348.02P
Assembly	F.93.348.02M
Roof Lining (Coupe)	F.93.348.03P
Assembly	F.93.348.03M
Targa Roof Lining	F.93.348.04P
Assembly	F.93.348.03M

Custom tailored solutions available upon request.

Carbon Interior

Pure Racing Technology

- ❖ Black or Silver Carbon, finished in high gloss polish
- ❖ Special parts and individual interiors upon request
- ❖ Various colours available upon request. Surcharge of 30 % will apply



Specification	Order-No.
Main Instruments Frame*	F.92.348.01S
Assembly	F.92.348.01M
Ashtray*	F.92.348.02S
Assembly	F.92.348.02M
Cover for Center console* (incl. clima panel and blend arround gear shift)	F.92.348.03S
Assembly	F.92.348.03M
* (parts in exchange)	
Entrace step cover R+L	F.92.348.05S
Assembly	F.92.348.05M
Stainless steel ledge with Imola Racing Logo for the original entrace cover (as replace for rubber ledge)	F.91.EL.06S
Assembly	F.91.EL.06M

Custom tailored parts available upon request.



Aluminum Interior

High Tech Race Looks

- ❖ CNC milled aluminum in fine matt finish

Specification	Order-No.
Hand Brake Grip	F.91.HBG.01T
Assembly	F.91.HBG.01M
Door Handle	F.91.TÜK.01T
Assembly	F.91.TÜK.01M
Gear Shift knob chrome	F.91.KU.01T
Gear Shift knob chrome (with 5 gangway shift)	F.91.KU.02T
Assembly	F.91.KU.01/02M
Pedalset for F348	F.91.PED.01T
Assembly	F.91.PED.01M
Aluminum Perforated Footrest "Dead Pedal"	F.91.FS.01T
Assembly	F.91.FS.01M

Custom tailored parts available upon request.

Velour Carpets

OEM Quality Equipment

- ❖ Tasteful handcrafted finish
- ❖ Finest velours quality
- ❖ Non slippery



Base Colour	Piping	Order-No.
Black Black Creme Tan	Red Yellow Creme Tan	F.95.348.00V
Surcharge for piping in leather		F.95.348.10V

Car Cover

Effective Protection

- ❖ Fits various modells, custom made available
- ❖ Perfect protection, no condensation
- ❖ With rubber bands, zipper entry on driver side and carry on bag

Specification	Order-No.
Car Cover Contour (standard form)	MSR
Car Cover Individual (custom form)	CCN348R
Roof Upholstery (strongly recommended for convertibles)	CCD348R
2. Mirror Cover	CCS348R

Conditions an additional notes

All prices are plus shipping and packing. All goods are ex-warehouse and bills are to be settled by cash upon delivery service or paid by credit card. All deliveries are subject to our General Business Conditions. With the publication of this list all previous lists become invalid. Prices and technical specifications can be changed. All mistakes reserved.

Validity: January 2007



Dimex Automotive Group
Fritz-Haber-Strasse 3
D-65203 Wiesbaden
Germany

Tel +49 (611) 505606-0
Fax +49 (611) 505606-99

Mail info@dimex-group.com
Net www.dimex-group.com